



We'll be the judges: the expert panel choosing the winners of the first Evening Standard Home Design Awards at Michelin-star Sketch London restaurant in Conduit Street, W1

The professionals

We reveal the architects, designers and influencers who scooped our first Home Design Awards with their fabulous ideas. By **Barbara Chandler**

LONDONERS have never loved their homes more. Social media's rolling feed of "inspo and info" has powered a home improvements surge, from hanging a few framed prints to full-scale renovation. "Influencers" using their personal projects to promote goods and services have a loyal fan base. Demand for professional home styling help from shops, designers and architects has rocketed, while our Homes & Property Wednesday supplement has kept readers at the cutting edge for more than 20 years. Entries flooded in for the first Evening Standard Home Design Awards, given in five categories of Living room, Bedroom, Kitchen, Bathroom and Garden, for the best designs of the past 12 months. There are two winners in each

category: a reader homeowner and a professional, whether architect, interior designer or key influencer. The expert judges set about their task at Sketch London restaurant in Conduit Street, Mayfair. On the panel were: Homes & Property editor Janice Morley; myself as an interiors writer; British Institute of Interior Design past president Dan Hopwood; design journalist and author of Mad About The House Kate Watson-Smyth; interior designer and TV presenter Sophie Robinson; Dulux creative director Marianne Shillingford; Homes & Property digital editor Kristy Gray and Thomas Sanderson product manager Laura O'Connell. The prizes were luxury bed linen from Tielle Love Luxury, worth £550; a Bose Home Speaker 500, worth £400, and a £50 voucher to spend in the Lecture Room and Library, Sketch London's luxe two Michelin-star dining room.

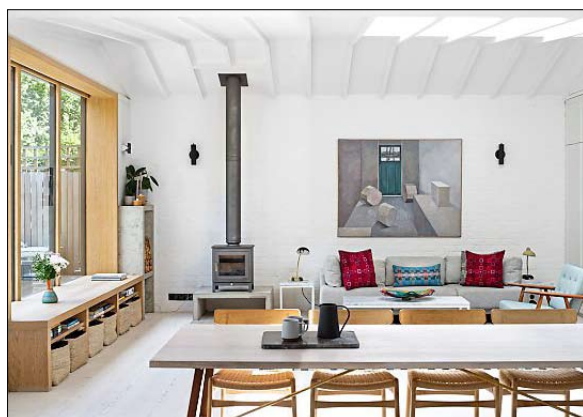
Photographs: **Juliet Murphy**



KITCHEN WINNER (PROFESSIONAL category) **MAX de Rosee** BASED at Notting Hill Gate, award-winning architectural and interior design company De Rosee Sa, founded in 2007, now has a team of 12. Architect and co-director Max de Rosee designed a rear kitchen/living extension to a south London home for a young family. "This is the heart of the home," he says, "one space for cooking, eating, socialising and study."

Marble; table and bench from Another Country; lights, Workstead. **Max's tips:** "Get as much light into your kitchen as possible. Have plenty of room to move around an island unit, with hob and sink within easy reach. Doors into the garden are a link to outdoors — especially fun in summer. "Use natural materials where possible. They age better than man-made."

deroseesa.com



LIVING ROOM WINNER (PROFESSIONAL category) **BHAVIN Taylor** COLOUR, pattern and style have transformed a "white box" in a new-build two-bedroom apartment in Wandsworth Town. TAKING inspiration from the mustard and charcoal rug, interior designer Bhavin hung wallpaper on opposing walls for immediate impact. ADDING more pattern — but monochrome — on the lounge chair and cushions is bold and original and "layers" the space. The original high-

gloss kitchen is framed with mustard paint, leaving a "quiet area" for the dining table and chairs. **Sourcing:** wallpaper, Cole & Son; colour-matched paint for kitchen, Valspar; lamp, lounge and dining chairs, West Elm; dining and small tables, Habitat; artwork, King & McGaw.

What the judges said: "Dramatic living space, calming kitchen beyond"; "Great shout-out for wallpaper"; "Clever use of high street brands." **Bhavin's tips:** "Love colour, embrace pattern. Be bold and go by your gut. Ignore what people say — this is for you."

● Bhavintaylorltdesign.com

BATHROOM WINNER (PROFESSIONAL category) **DOMINIC McKenzie** A SLEEK, chic bathroom wins the professional award for bathrooms for Dominic McKenzie who heads an award-winning architectural practice in north London. The project renovated and extended a ground-floor flat in a Victorian house in Hampstead. USING a steel framework, two bathrooms were fitted between two bedrooms. "We treated this bathroom more like a spa," says Dominic. "It is stripped down to bare essentials with sensual materials and careful lighting." Walls are water-resistant polished grey plaster. Dimmable LED lighting runs along a ceiling recess. Fittings are top quality, with "jewel-like brass taps". **SOURCING:** Link wall-hung loo, Flaminia; Quattro.Zero basin from Falper; Venø compact bath from Copenhagen Bath. **WHAT the judges said:** "Seems to float in space, thanks to recessed lighting and dark floor"; "Brass taps are so much warmer than chrome"; "Mirrored cupboard doors create a clever space illusion."

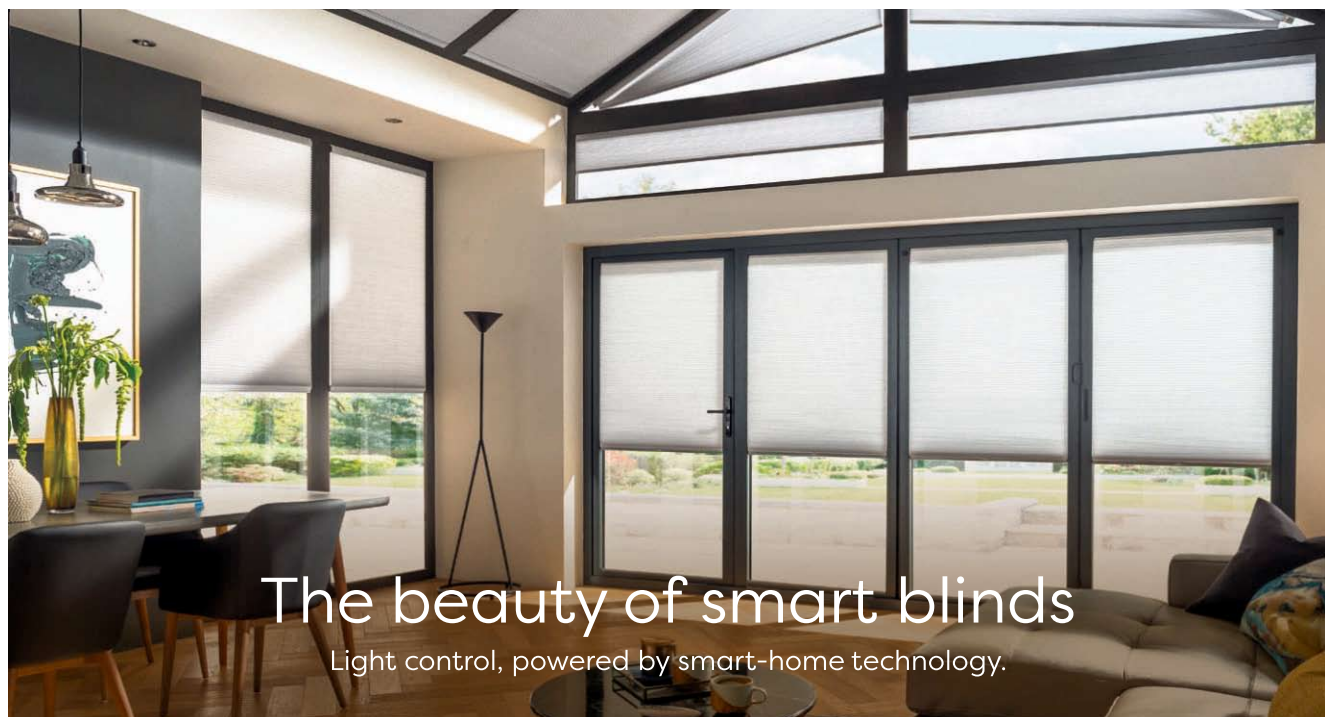
DOMINIC'S tip: "Think beyond the purely functional, in a more poetic,



GARDEN WINNER (PROFESSIONAL category) **THERESA Gromski** "I WANTED for another room, but out of doors," says Theresa Gromski, who

lives in an Edwardian three-storey terrace house. She has turned her patio into a welcoming space, whether for reading solo or having a party. Theresa is an influencer and freelance illustrator with nearly 50,000 followers on Instagram. "I wanted a lot of pattern and textiles, cosy cushions and throws," she adds. Underfoot, concrete was replaced with porcelain slabs and outdoor rugs. With the help of husband Tom, she built seating out of reclaimed scaffold boards. EXTRA touches include lanterns, strings of lights and an outdoor umbrella, while plants include bamboo and black bamboo, exotic grasses, heucheras and ferns. **Sourcing:** Arizona bistro garden chairs and side table gifted by George Home; fire pit gifted by VonHaus; square black planters gifted by Get Potted; large arched outdoor mirror gifted by Cox & Cox; seat cushions, Madam Stoltz; outdoor rugs, La Redoute and Ikea; solar lights, Wilko. **Theresa's tips:** "Paint fences black to show off your furniture and textiles. Have a handy storage box to stow cushions away when it rains. For tropical vibes go for greenery rather than flowers, and mix vintage and modern planters." **What the judges said:** "I want to go in and sit down — so pretty and welcoming"; "Original use of railway sleepers."

● @theresagromski



The beauty of smart blinds
Light control, powered by smart-home technology.

TS
THOMAS SANDERSON
THE BEAUTY OF BESPOKE
SHUTTERS • BLINDS • CURTAINS

Book your personal design consultation.
0800 688 8138 or thomas-sanderson.co.uk



BEDROOM WINNER (PROFESSIONAL category) **CHARLIE Boardman** A HOME renovation expert with over 15 years in the industry, Charlie Boardman is a single mum with two young boys. She bought her two-storey late Victorian house in north-west London in 2014, and has expanded the original three bedrooms into four with three bathrooms over three floors — testimony to her design skill as a professional property project manager. This expertise underpins Bricks & Velvet, her new interior design and project management business. She submitted her own bedroom for our awards. Focal point is a classic stick-back Ercol bench, bought for £300 from Ardingly Antiques & Collectors Fair in West Sussex. Wall paint is a soft green, and fitted panelled cupboards in the same shade conceal the chimney breast. Velvet curtains and blinds have blackout linings. Floorboards, painted white, conceal a sound-proofing layer. **SOURCING:** bespoke steel-finish curtain rail, Pret A Vivre; velvet curtain/blind, Palmeral, House of



Hackney; wall and cupboard paint (in Pigeon) and floor paint, Farrow & Ball; cupboard knobs, Zara Home; bedside tables, Etsy. **WHAT the judges said:** "Bench is brilliantly positioned"; "Painting floorboards is so chic — but cheap";

"Lush velvet lifts a room into luxury." **CHARLIE'S tips:** "Pay attention to every small detail, like the position of light switches and the way a door hangs. Make a list of all you want in store and design accordingly. Floorboard paint is long-lasting and